

Wireless Wire nRAY

The most compact wireless 2 Gb/s aggregate link in the 1500 m range or more!

Improved snow-resistant design is perfect for harsh weather environments. Cables can no longer limit you!



1500
m

Reach distance in the
1500 m range or more



Preconfigured to
connect automatically



Secure AES encrypted
60 GHz connection



Compact and
durable



iOS/Android app for quick
and easy configuration



PoE injectors included



Gigabit Ethernet

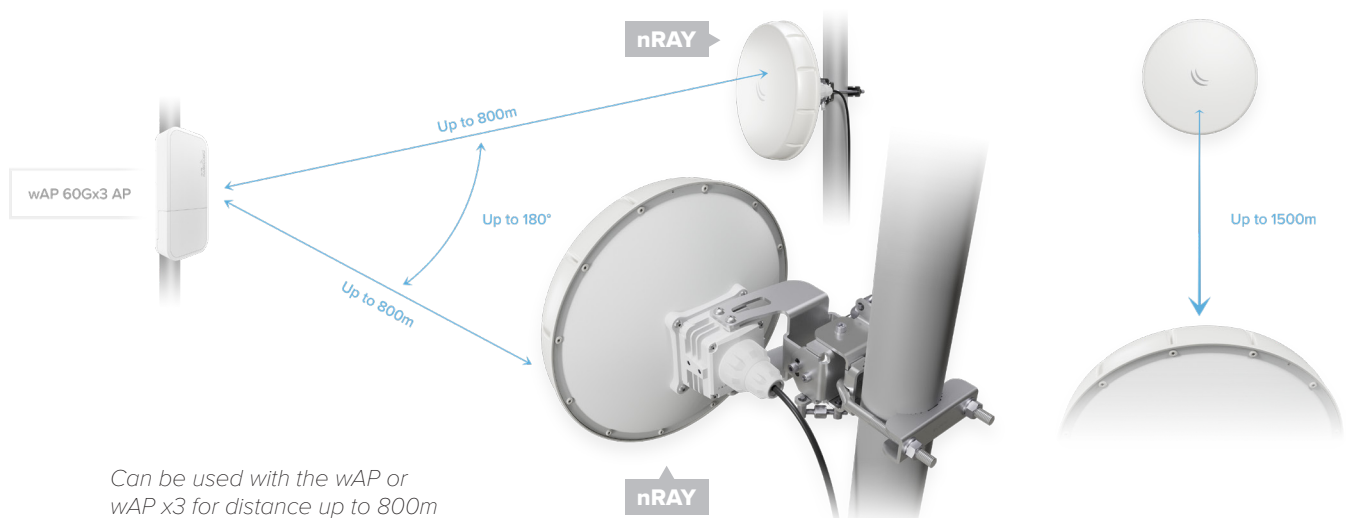
Our team has gathered and taken into account your feedback to make a worthy successor of our popular Wireless Wire Dish. Now we are proud to present the best plug-and-play 60 GHz point-to-point link solution to date – the Wireless Wire nRAY. It is a kit of two pre-paired devices that make a secure AES encrypted wireless connection.

It can easily cover a distance of 1500 meters and reach fiber-like speed, and we have made some serious structural improvements. With the latest antenna technologies, this device is very compact, but even more durable than its predecessors.

*Smaller than LHG,
same antenna gain!*



The new form-factor has been designed with snowy areas in mind – you won't have to worry about huge chunks of snow getting stuck and messing with the signal. Due to its size and shape, the nRAY also attracts less unwanted attention. Using the special fine-tune adjustment screws, a perfect alignment can be achieved.



The 60 GHz frequency is unaffected by the crowded wireless spectrum, so you can enjoy a smooth connection even in a busy urban environment. A powerful arm64 dual-core CPU running at 1 GHz ensures wire speed throughput in nearly all packet sizes. The included devices are preconfigured to connect automatically, simply point them at one another and power them on! We have included the power supplies, PoE injectors and a handy precision mount for easier alignment - the solidMOUNT. It is an advanced pole mount metal adapter that allows adjustment both vertically and horizontally.



For even greater precision and easier installation, we have made the nRayAIM-DH1 attachment that can be used to add a scope of your choice. Available separately.

Specifications

Product code	nRAYG-60adpair
Units	2
CPU	88F3720, 2 cores, 1 GHz
Architecture	ARM 64bit
Size of RAM	256 MB
Number of 1G Ethernet ports	1
Max EIRP	55 dBm or 40 dBm with EU region
Number of DC inputs	1
DC input type	PoE-in (12 - 57 V)
Power adapter nominal voltage	24 V
Power adapter nominal current	0.38 A
Max power consumption	6 W
PoE-in	802.3af/at
Operating system	RouterOS (License level 3)
Dimensions	261 x 166 mm
Operating temperature	-40°C to +70°C tested

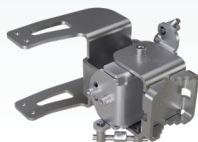
Certification & Approvals

Certification	CE/RED, FCC, IC, EAC, ROHS
---------------	----------------------------

Included parts



24 V 0.38 A
power adapter



nRAY solidMOUNT



PoE injector